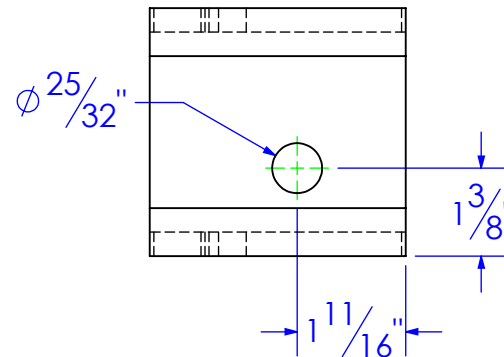
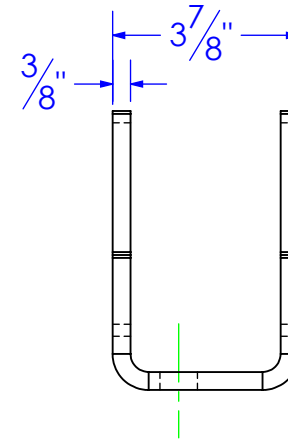
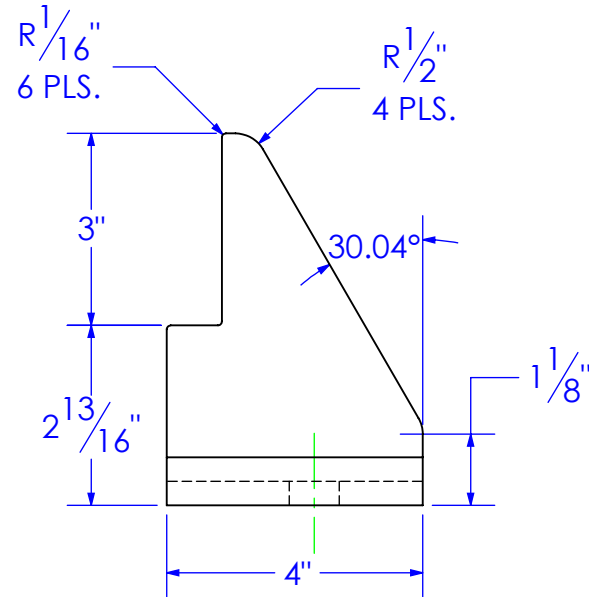
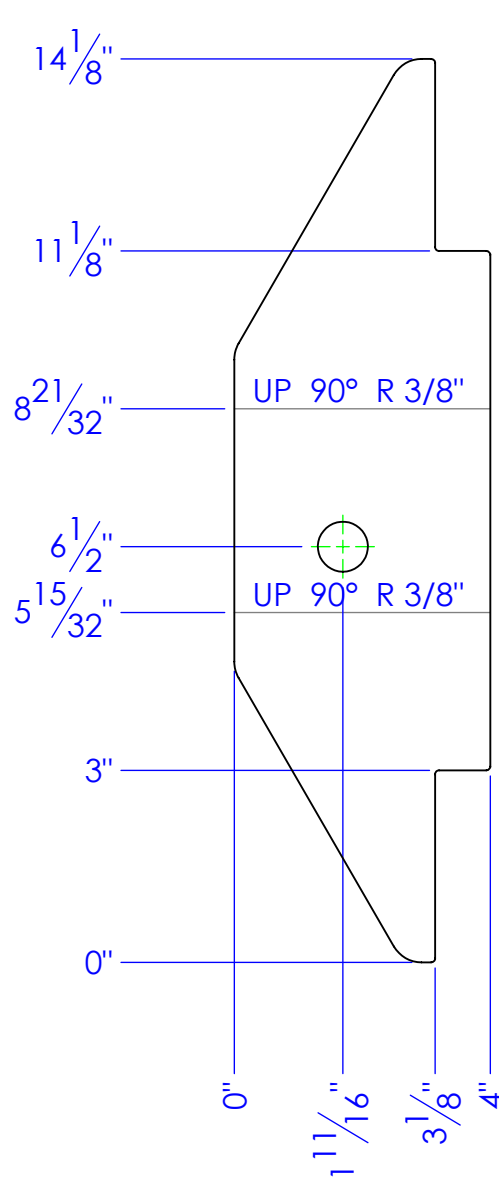


PART NUMBER	DESCRIPTION	MATERIAL
FP-FLL6-REAR SUPPORT-DS	LEVEL LOK, REAR SUPPORT, FLL-6, DS	3/8" HRS

REVISIONS			
REV.	DESCRIPTION	DATE	APPROVED
A	INITIAL RELEASE	10/20/2016	



PROPRIETARY AND CONFIDENTIAL
THE INFORMATION CONTAINED IN THIS
DRAWING IS THE SOLE PROPERTY OF TRIPLE
C INC. ANY REPRODUCTION IN PART OR
AS A WHOLE WITHOUT THE WRITTEN
PERMISSION OF TRIPLE C, INC IS PROHIBITED.

UNLESS OTHERWISE SPECIFIED:
DIMENSIONS ARE IN INCHES
TOLERANCES:
FRACTIONAL $\pm 1/16$
ANGULAR: MACH ± 1 BEND \pm
TWO PLACE DECIMAL $\pm .010$
THREE PLACE DECIMAL $\pm .005$

MATERIAL 3/8" HRS
DO NOT SCALE DRAWING

	NAME	DATE
DRAWN	ETHAN	10/24/2016
PART #	Part #	
ASM #	Asm #	
COMMENTS:		
LEVEL LOK, REAR SUPPORT, FLL-6, PS		

P.O. BOX 248, SABETHA, KS 66534
(785) 284-3674 FAX (785) 284-3931

TRIPLE C
INC

SIZE	DWG. NO.	REV
A	90-1863-3	A
SCALE: 1:4	WEIGHT: 4.18	SHEET 1 OF 1